

# Loughrea Cast Iron, Co. Galway TM – Overview Piggott Street

- Farrans have been contracted by Irish Water to carry out mains rehabilitation throughout the North and North West Regions of Ireland. One of the areas highlighted for mains rehabilitation is in Loughrea. The scheme is over 3 different DMAs, these are known as Loughrea Cast Iron, Moore Street and Kings Street schemes.
- In order to complete the necessary mains replacement works for Loughrea we will be required to have a Road Closure on **Piggott Street**
- Access to Business Owners, Residents and Emergency Services will be maintained throughout.
- The connections on Barrack Street and Main Street will be control using 3-Way Traffic Lights or Stop/Go.
- Slide 2 Shows an overall layout of the Scheme
- Slide 3 shows the Road Closures and Diversion Route
- Slide 4 shows 3 Way Set up traffic management for Connection Works at Junctions.
- Slide 5 shows the Typical TM Diversion arrangements which will be used during the works
- The following plan shows the areas where works will be taking place and where the Traffic management systems will be used.
- All traffic management signage will be accordance with Chapter 8. Signs such as ‘Men at Work’ and advance warning distance markers are not shown on these plans for clarity but will be in place during the works.

## NOTES

1. All signs will comply with Traffic Sign Regulations.
2. All Traffic Management to be in accordance with Chapter 8.

**FARRANS**

**UTILITIES**

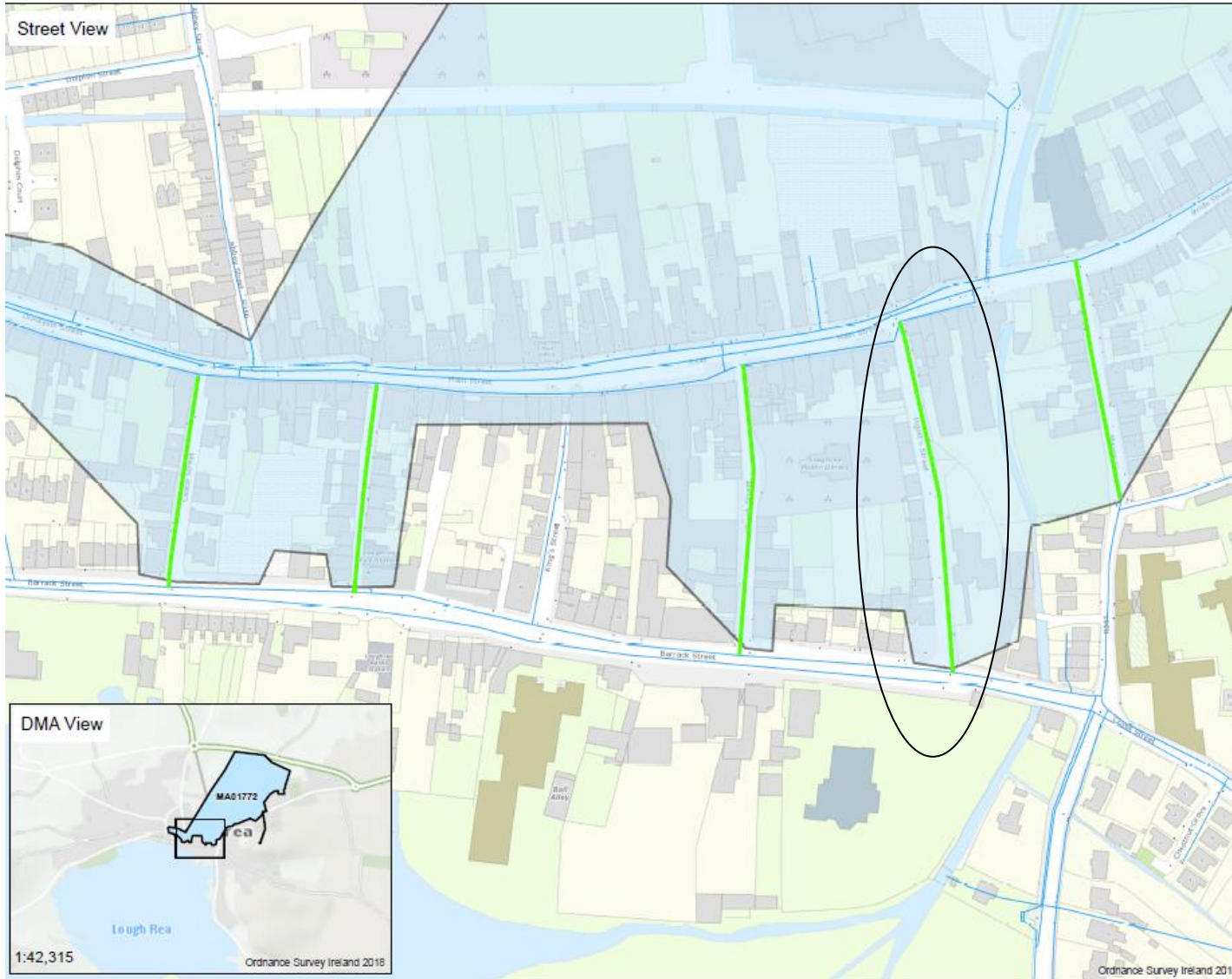
Farrans Construction Ltd  
99 Kingsway,  
Dunmurry,  
BT17 9NU.

### Project:

Irish Water Network  
Management

**Loughrea Cast Iron  
Batch 1, Co. Galway**

# Loughrea Cast Iron, Scheme Layout



## NOTES

1. All signs will comply with Traffic Sign Regulations.
2. All Traffic Management to be in accordance with Chapter 8.

**FARRANS**

### UTILITIES

Farrans Construction Ltd  
99 Kingsway,  
Dunmurry,  
BT17 9NU.

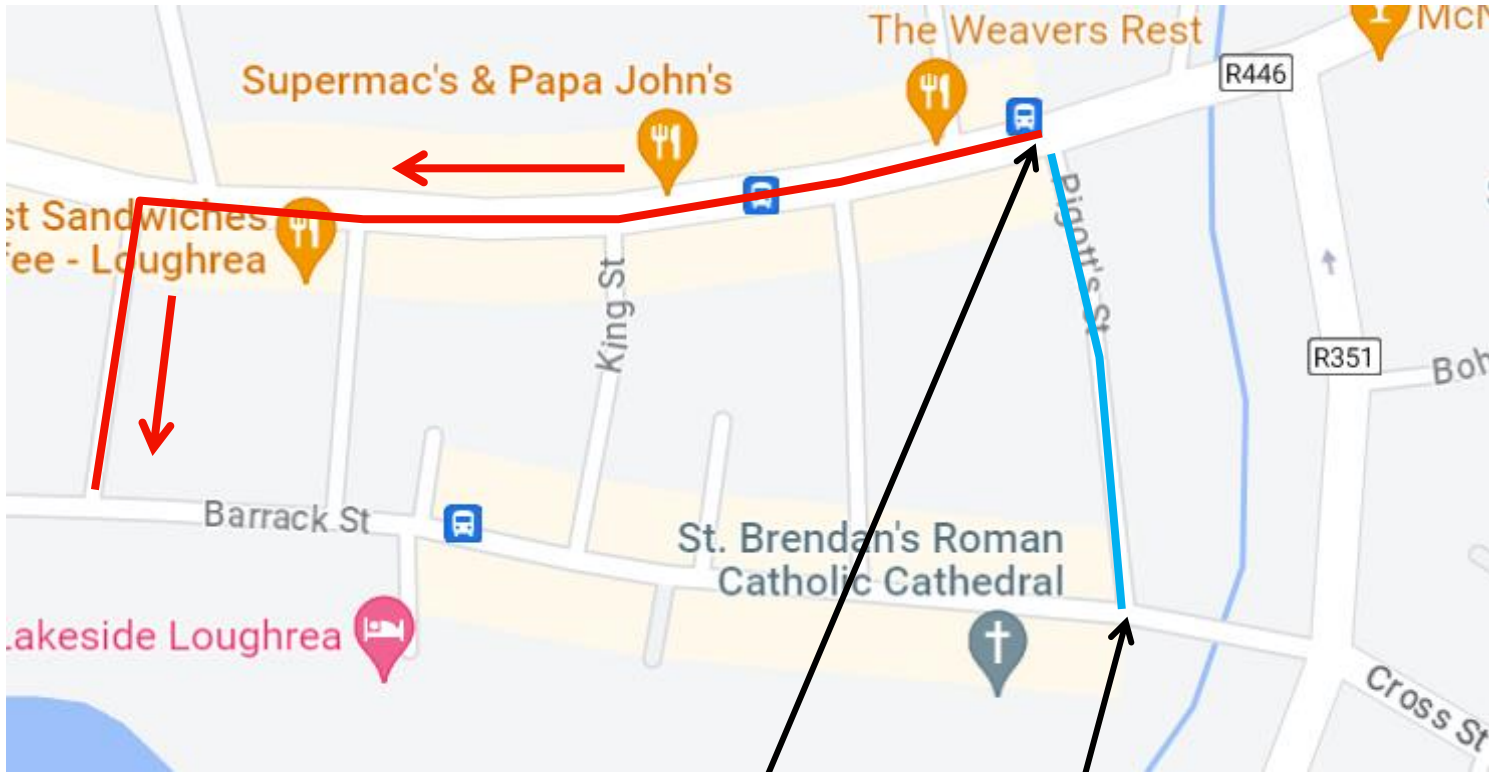
### Project:

Irish Water Network  
Management  
Loughrea Cast Iron  
Batch 1, Co. Galway

**Works Area for Mains Rehabilitation – Piggot Street Circled**

# Piggott's Street Closure and Diversion

Road Closure on Piggott's Street for access to Barrack Street Traffic will travel along Main Street and down Castle Street. The Road will be closed at Both Junctions and Access will be available for Locals and Residents



3-Way Traffic Lights or Stop/Go required for connections to existing Main

- NOTES**
1. All signs will comply with Traffic Sign Regulations.
  2. All Traffic Management to be in accordance with Chapter 8.

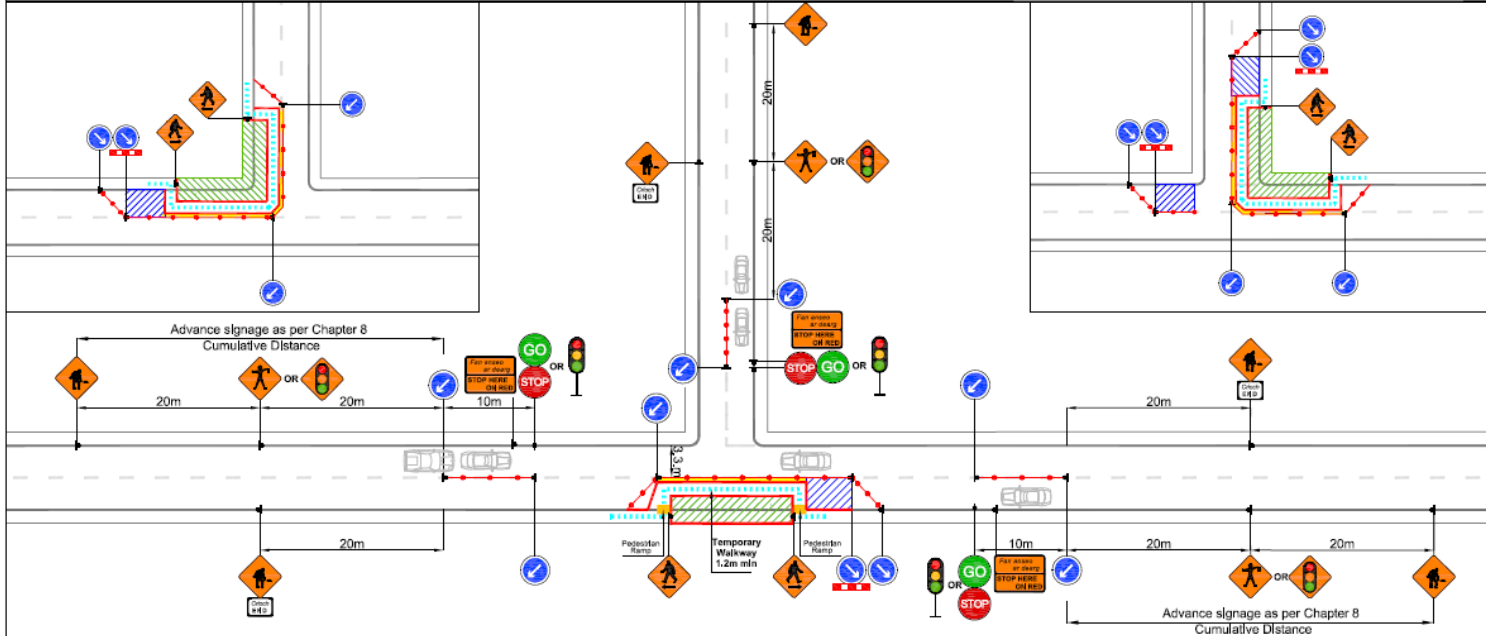
**FARRANS**  
UTILITIES  
Farrans Construction Ltd  
99 Kingsway,  
Dunmurry,  
BT17 9NU.

**Project:**  
Irish Water Network  
Management  
**Loughrea Cast Iron  
Batch 1 Co. Galway**

# Loughrea Cast Iron, TM Set-ups

## Traffic Management Plan for Level 1 - STATIC WORKS - Urban and Low Speed

### Three Way Stop and Go / Temporary Traffic Signals Operation (Temporary Footway on Carrlageway)



LEGEND	Design Parameters Level 1 Typ A& B	1(i)	1(ii)	1(iii)	1(iv)	Note:
1. Sign Location	1. Speed of the Road (km/h):	30	40	50	60	1. All signs to comply with Chapter 8 of the "Traffic Signs Manual" - Guidance Document.
2. Lateral Safety Zone	2. Sign Size (mm):	450	450	600	600	2. All Traffic Management to be carried out in accordance with Chapter 8 of the "Traffic Signs Manual".
3. Approved Barrier System	3. Signs Visibility (m):	25	35	50	60	3. Detailed Risk Assessment to be carried out prior to the installation of Traffic Management System.
4. Traffic Cones	4. Number of Advance Signs (No):	2 (1)	2	2	3 (2)	4. The Contractor shall be responsible for providing all required ramp access to all changes in road surface level where traffic runs on a temporary surface and also for cycle/pedestrian ramps where footpath, cycle paths or any surface which has a level discontinuity as a result of the works.
5. Works Area Surrounded with Approved Barrier	5. Cumulative Distance (m):	20 (10)	30	40	60 (40)	5. Exact sign positions to be agreed on site.
6. Longitudinal Safety Zone	6. Dist. between Advance Signs (m):	1	15	20	20	6. All safety zones to be maintained at all times.
7. Longitudinal Safety Zone	7. Leading Taper:	1 in 1	1 in 1	1 in 5	1 in 10	7. All affected Parties and An Garda Stochana to be notified prior to works commencing.
8. Longitudinal Safety Zone	8. Longitudinal Safety Zone (m):	0.5	0.5	5	15	8. Signs to be positioned so as not to cause an obstruction to other road users.
9. Longitudinal Safety Zone	9. Lateral Safety Zone (m):	0.5	0.5	0.5	0.5	9. Minimum lane width of 3m to be maintained at all times.
10. Longitudinal Safety Zone	10. Taper Cone Spacing (m):	1	1	3	3	10. Minimum footpath width of 1.2 m to be maintained at all times.
11. Longitudinal Safety Zone	11. Longitudinal Cone Spacing (m):	3	3	3	6	11. All signs shall be as per table 8.2.2.2 - 8.2.2.5 of the "Traffic Signs Manual".
12. Longitudinal Safety Zone	12. Cone Height (mm):	750	750	750	750	12. Safety barrier to be in accordance with IS EN 1317.
13. Longitudinal Safety Zone	13. Lane Width (m):	2.5	3	3	3	13. "End of Roadworks" signs placed 20m to 50m from end of works area.
						14. All vehicles will be parked in accordance to law and will not obstruct any entrance or cause disruption to members of the public.

### NOTES

1. All signs will comply with Traffic Sign Regulations.
2. All Traffic Management to be in accordance with Chapter 8.

**FARRANS**

UTILITIES

Farrans Construction Ltd

99 Kingsway,

Dunmurry,

BT17 9NU.

Project:

Irish Water Network Management

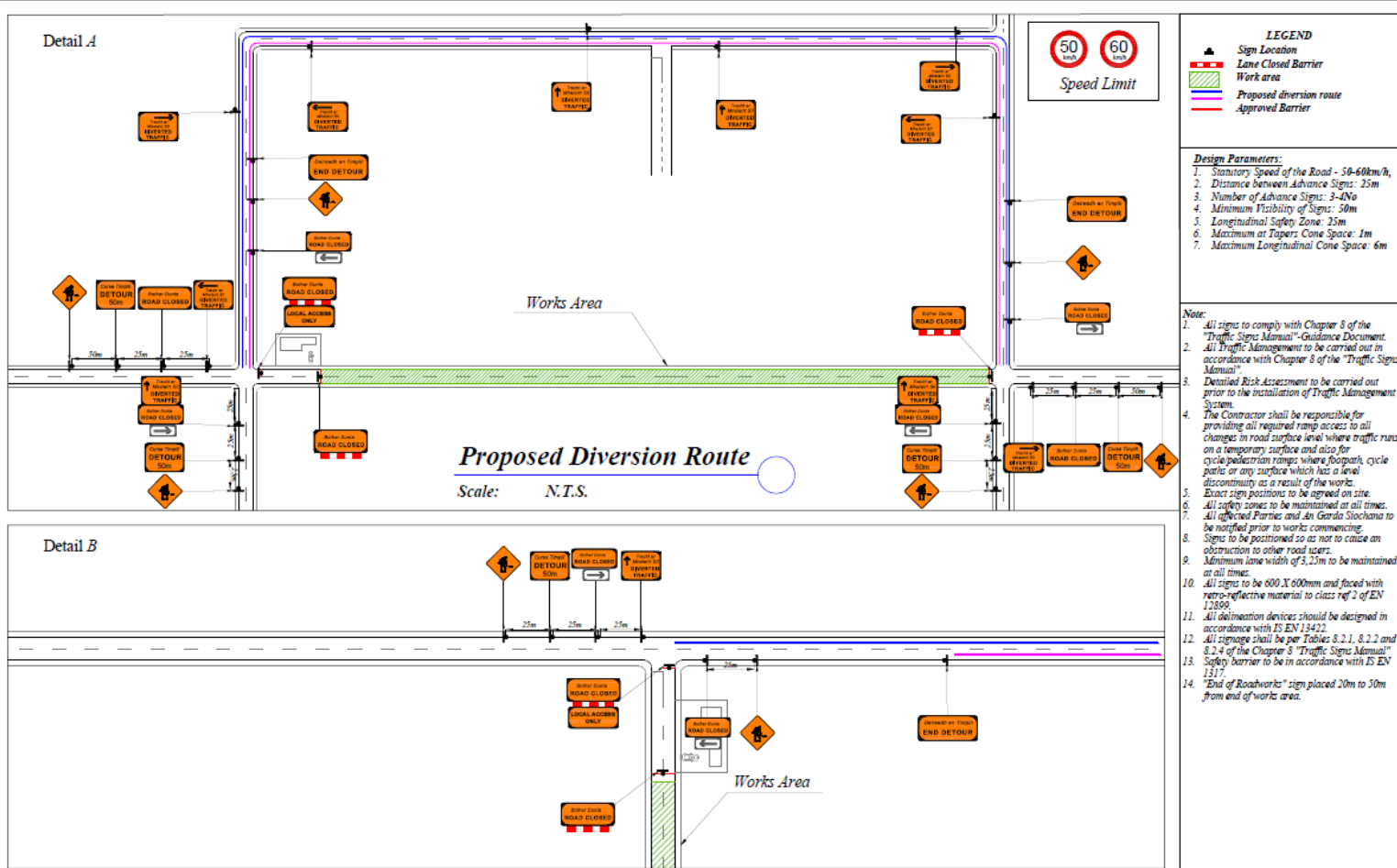
Loughrea Cast Iron Batch 1, Co. Galway



Rev:	Description:	Date:	Job Details:	Drawing:	Dwg no:
			Irish Water Network Management works at.....	Typical Traffic Management Detail for Three Way STOP & GO Traffic Signals Operation.	006
					Rev:
			Sheet:	CAD File ref.:	Drawn By: AK
					Date: May 2022
					Scale: As Shown

3-Way Traffic Lights or Stop/Go required for the Connection to the existing Main

# Loughrea Cast Iron, TM Set-ups



## NOTES

1. All signs will comply with Traffic Sign Regulations.
2. All Traffic Management to be in accordance with Chapter 8.

**FARRANS**

UTILITIES

Farrans Construction Ltd  
99 Kingsway,  
Dunmurry,  
BT17 9NU.

Project:

Irish Water Network  
Management

Loughrea Cast Iron  
Batch 1, Co. Galway

**FARRANS**

Rev:	Description:	Date:	Job Details:	Drawing:	Dwg no:
			Proposed Traffic Management Plan for Proposed Road Closure	Typical Road Closure and Detour Details for Road Level 1 & 2 30km/h & 50km/h and 60km/h	02
			Sheet:	Drawn By: DM	Rev:
			CAD File ref.:	Date: September 2017	Scale: As Shown

Diversion Set-Ups for each Street